



## Leander Road, Brixton, SW2

2 bedroom flat - conversion for sale

£549,950

Leasehold

### Property Details

A fantastic two double bedroom, two bathroom flat with two Juliet balconies in a double-fronted Victorian on a neighbourly street. Recently redecorated throughout with luxurious finishes and new bathrooms. Natural light is a re-occurring theme in this beautiful top floor home, with two almost entire walls of glass and multiple skylights. A lovely entrance stairwell adds to the appeal, winding around to provide a landing space. The open-plan reception is sure to wow guests, with bi-fold doors opening up to outside with a Juliet balcony. This fantastic entertaining space has a generous lounge, space to dine as well as wrap-around kitchen elevating the sociable vibe. Fluted wooden cabinetry is topped with substantial black worktops, a stylish combination offering ample storage space and plenty of surface. There is also substantial hidden eaves to store larger items. Across the inviting hallway, both bedrooms are nestled away from the sociable space, each with fitted wardrobes. The principal is particularly impressive with a charming en-suite and further bi-fold doors, perfect for enjoying a morning coffee or a stargazing nightcap. The main bathroom is conveniently set in the centre of the home, with a bathtub and a large skylight.

### Features

- Two double bedrooms
- Two bathrooms
- Two Juliet balconies
- Double fronted Victorian conversion
- Sought-after road with annual party
- Large supermarket in five minutes
- Brockwell Park a five-minute walk
- Herne Hill a ten-minute stroll through the park
- Brixton a fourteen-minute walk
- Chain-free

Council tax band C

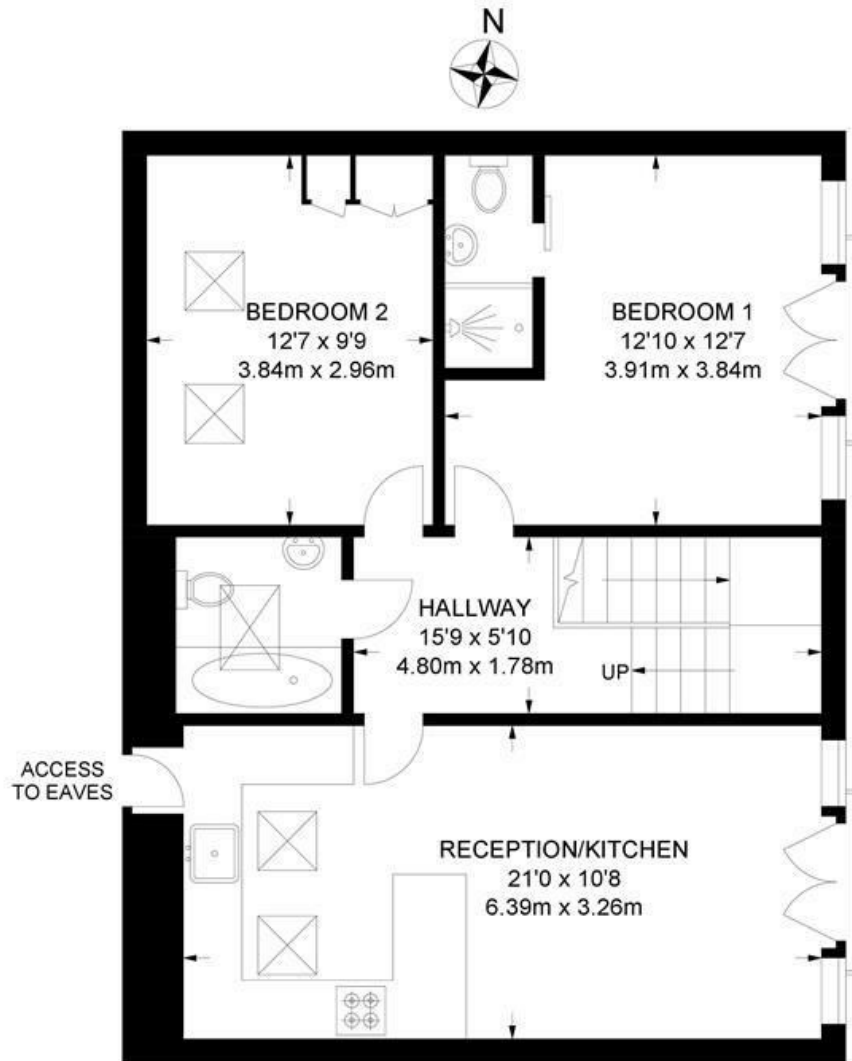
EPC rating C (77)



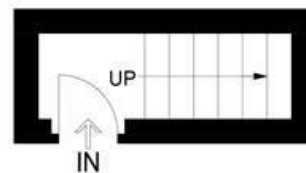
Leander Road, Brixton, SW2

**Leander Road, SW2**  
**2 Bedroom Flat**

APPROXIMATE GROSS INTERNAL AREA: **669 SQ FT / 62 SQ M**



**SECOND FLOOR**



**FIRST FLOOR**



While we try our very best, floor plans are produced as a guide only and we take no responsibility for the precise accuracy with which any property is represented.

Leander Road, Brixton, SW2

